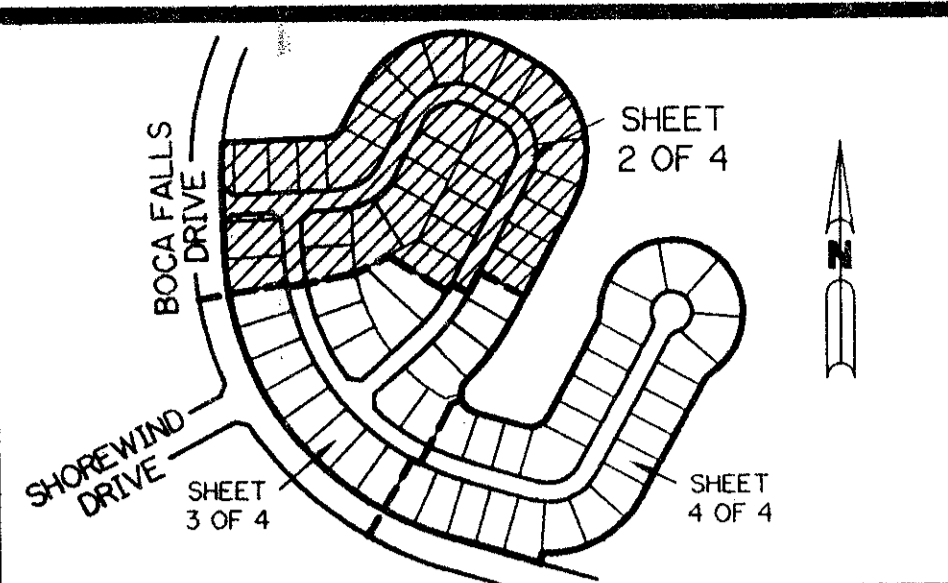


A PART OF THE BAY WINDS PLANNED UNIT DEVELOPMENT

# BOCA FALLS - PARCEL "M"

BEING A REPLAT OF ALL OF PARCEL "M" ACCORDING TO THE PLAT OF BOCA FALLS - PLAT ONE AS RECORDED IN PLAT BOOK 73, PAGES 124 THROUGH 131, INCLUSIVE, OF THE PUBLIC RECORDS OF PALM BEACH COUNTY, FLORIDA. LYING IN SECTION 22, TOWNSHIP 47 SOUTH, RANGE 41 EAST

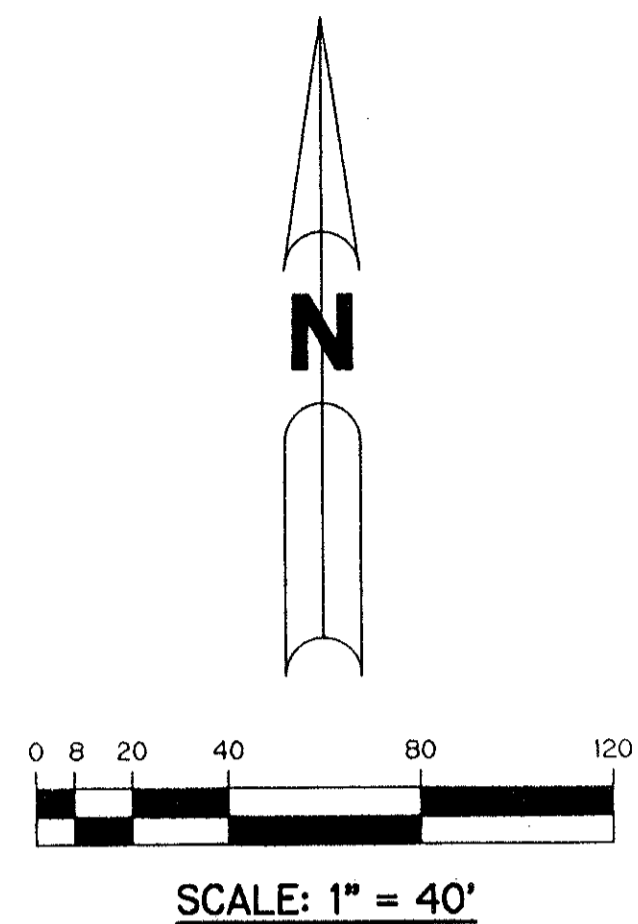
SHEET 2 OF 4 OCTOBER, 1994



KEY MAP  
N.T.S.

LEGEND:

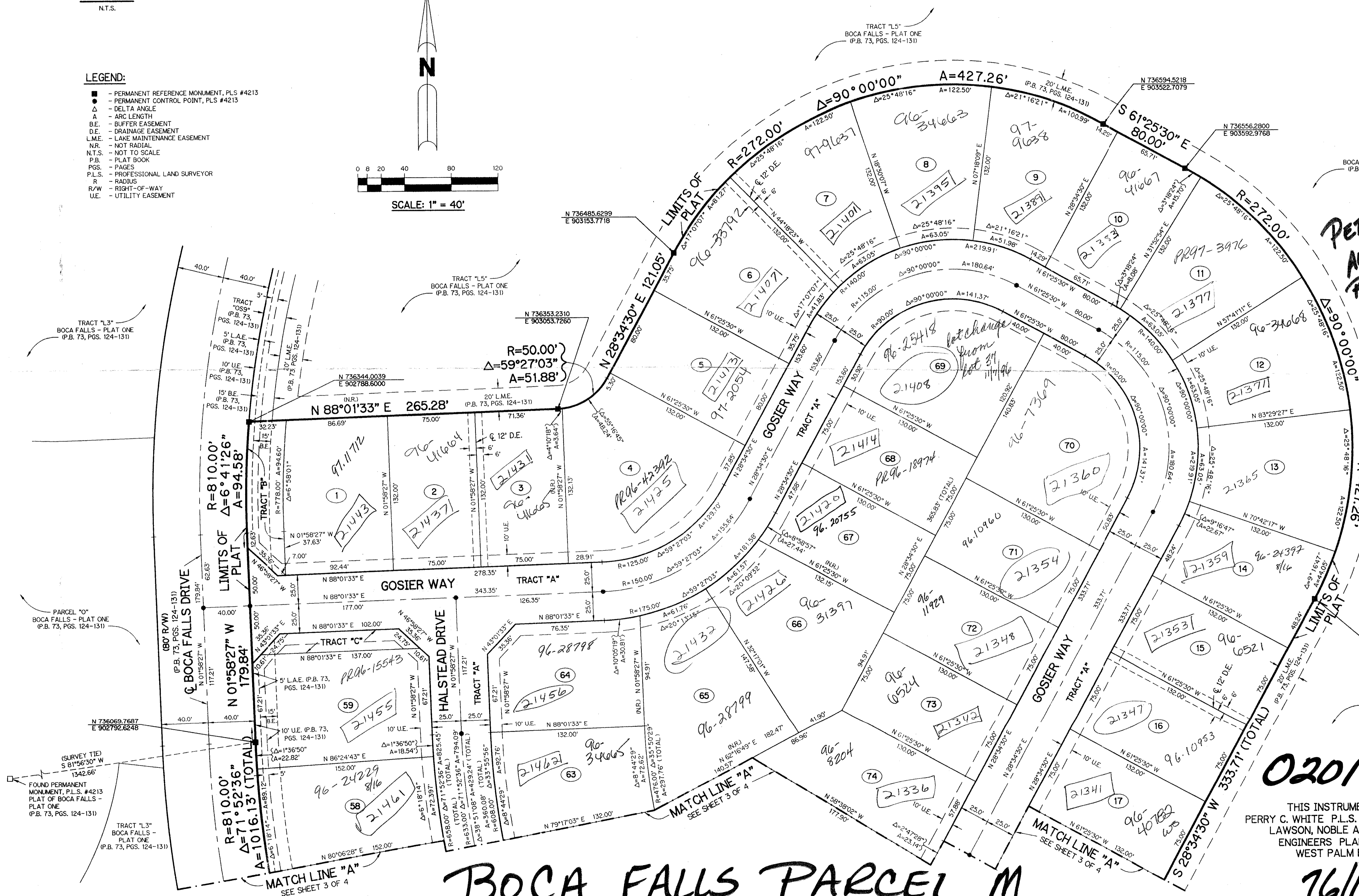
- - PERMANENT REFERENCE MONUMENT, PLS #4213
- - PERMANENT CONTROL POINT, PLS #4213
- Δ - DELTA ANGLE
- A - ARC LENGTH
- B.E. - BUFFER EASEMENT
- D.E. - DRAINAGE EASEMENT
- L.M.E. - LAKE MAINTENANCE EASEMENT
- N.R. - NOT RADIAL
- N.T.S. - NOT TO SCALE
- P.B. - PLAT BOOK
- PGS. - PAGES
- P.L.S. - PROFESSIONAL LAND SURVEYOR
- R - RADIUS
- R/W - RIGHT-OF-WAY
- U.E. - UTILITY EASEMENT



SUBDIVISION \* BOCA FALLS - PARCEL "M"  
 BOOK 76 PAGE 13  
 FLOOD ZONE AO-1 FLOOD MAP # 100B  
 CHAD # 69 ZONING RT  
 SE 80-47 ZIP CODE 33428  
 PUD NAME THE Bay WINDS

TAZ-778

PET. 80-47B  
 ALLOC. #0001  
 ROADS \$1139.00 PER UNIT  
 5/3/3/M



## 0201-021

THIS INSTRUMENT PREPARED BY  
 PERRY C. WHITE P.L.S. 4213 STATE OF FLORIDA  
 LAWSON, NOBLE AND ASSOCIATES, INC.  
 ENGINEERS PLANNERS SURVEYORS  
 WEST PALM BEACH, FLORIDA

# BOCA FALLS PARCEL M